

Prof. Dr. Alfred Toth

Quadrupel gruppentheoretischer semiotischer Reflexionen

1. In Toth (2026a) hatten wir die Subzeichenrelation als quadrarektische Relation dargestellt. Im folgenden stellen wir die drei gruppentheoretischen Reflexionen der Zeichenbezüge (vgl. Toth 2026b-c) als (symmetrische und asymmetrische) Quadrupel dar.

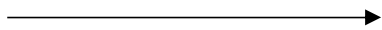
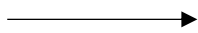
2. Quadrupel gruppentheoretischer semiotischer Reflexionen

2.1. Die Gruppe (PZ, \circ_2)

$$M = (1.1, 1.2, 1.3)$$

$$KM = (1.3, 1.2, 1.1)$$

1 2 3

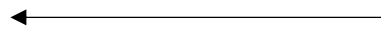


1 2 3

$$M' = (3.3, 3.2, 3.1)$$

$$KM' = (3.1, 3.2, 3.3)$$

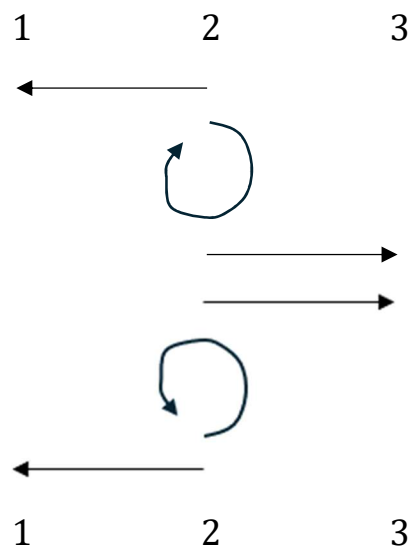
1 2 3



1 2 3

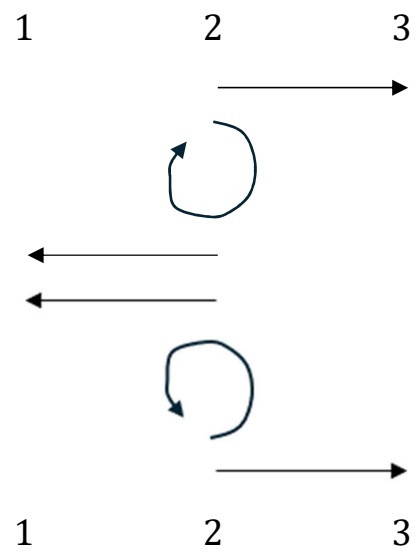
$O = (2.1, 2.2, 2.3)$

$KO = (2.3, 2.2, 2.1)$



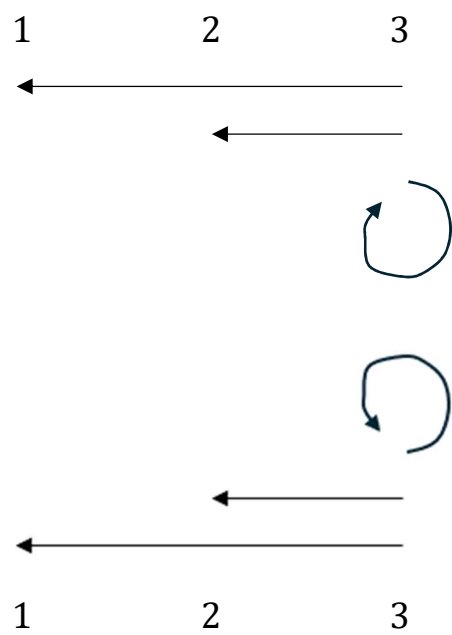
$O' = (2.3, 2.2, 2.1)$

$KO' = (2.1, 2.2, 2.3)$



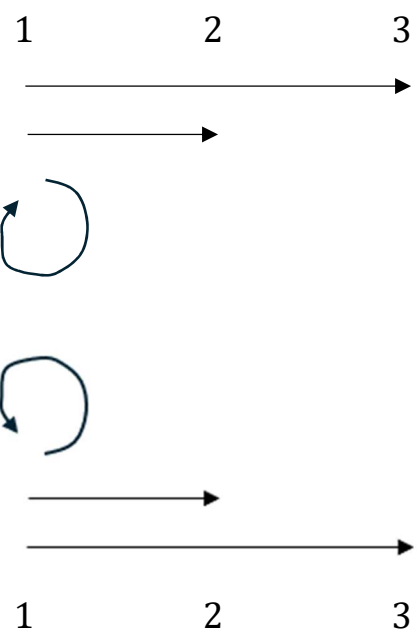
$I = (3.1, 3.2, 3.3)$

$KI = (3.3, 3.2, 3.1)$



$I' = (1.3, 1.2, 1.1)$

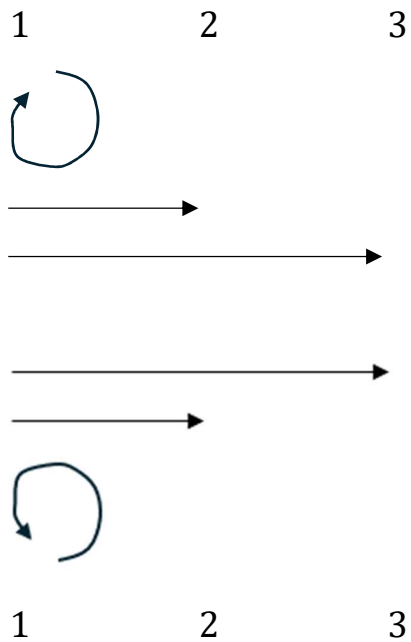
$KI' = (1.1, 1.2, 1.3)$



2.2. Die Gruppe (PZ, \circ_1)

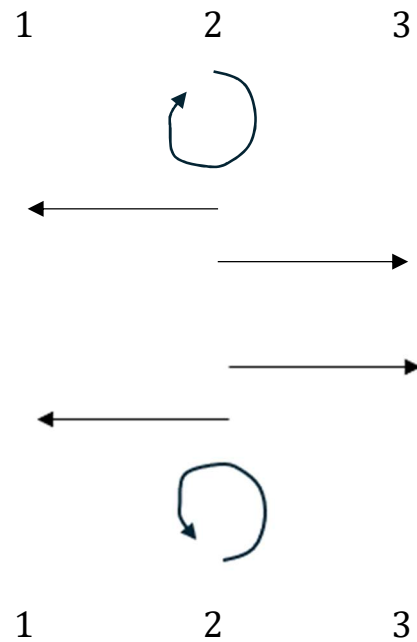
$$M = (1.1, 1.2, 1.3)$$

$$KM = (1.3, 1.2, 1.1)$$



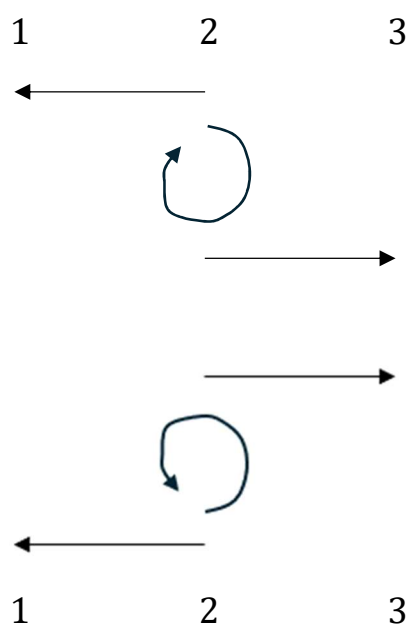
$$M' = (2.2, 2.1, 2.3)$$

$$KM' = (2.3, 2.1, 2.2)$$



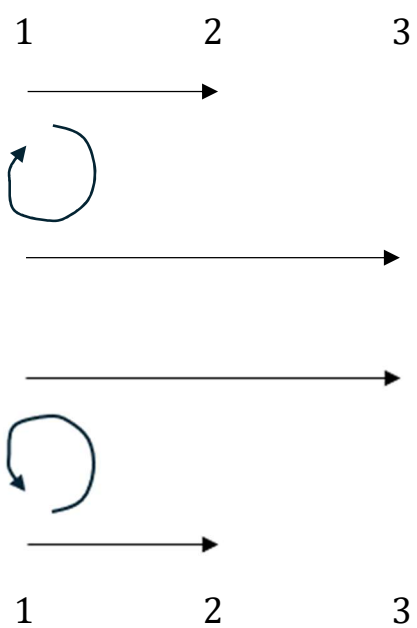
$$O = (2.1, 2.2, 2.3)$$

$$KO = (2.3, 2.2, 2.1)$$



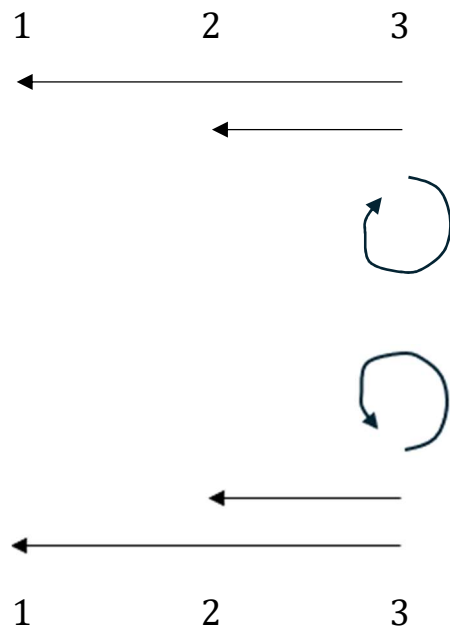
$$O' = (1.2, 1.1, 1.3)$$

$$KO' = (1.3, 1.1, 1.2)$$



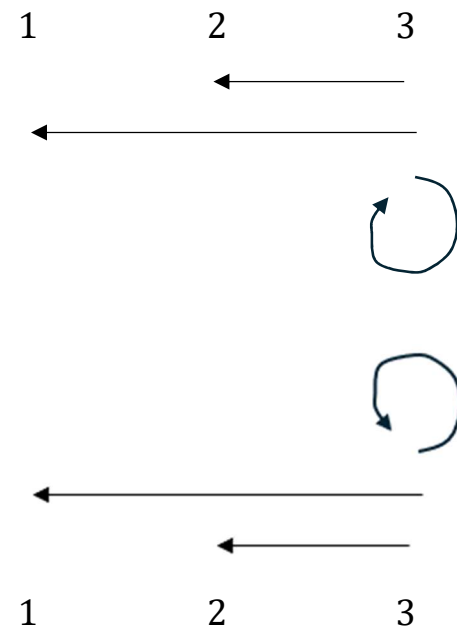
$$I = (3.1, 3.2, 3.3)$$

$$KI = (3.3, 3.2, 3.1)$$



$$I' = (3.2, 3.1, 3.3)$$

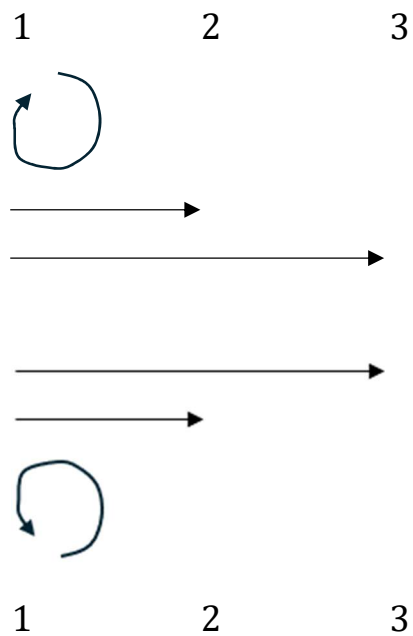
$$KI' = (3.3, 3.1, 3.2)$$



2.3. Die Gruppe (PZ, \circ_3)

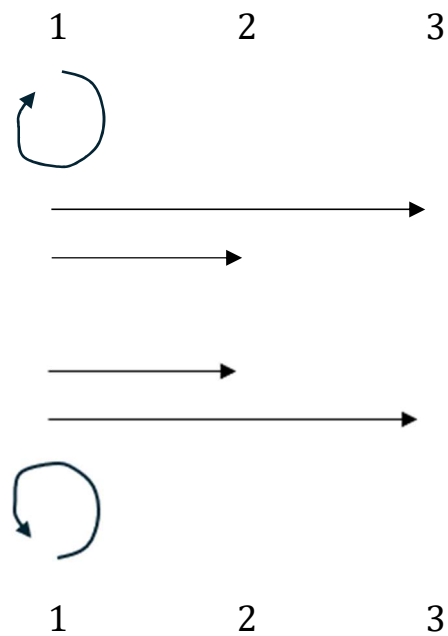
$$M = (1.1, 1.2, 1.3)$$

$$KM = (1.3, 1.2, 1.1)$$



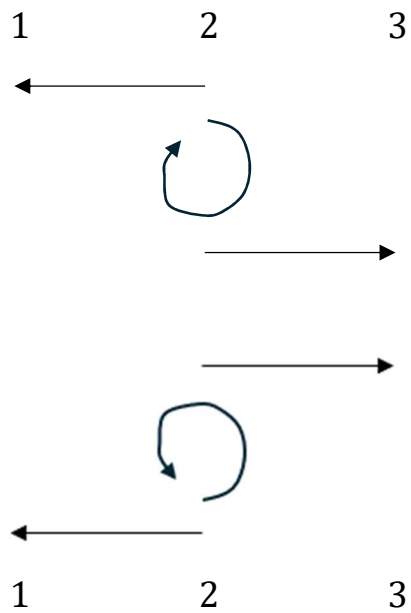
$$M' = (1.1, 1.3, 1.2)$$

$$KM' = (1.2, 1.3, 1.1)$$



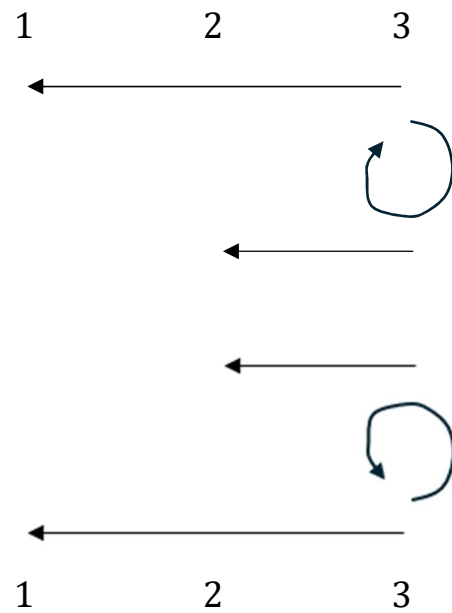
$O = (2.1, 2.2, 2.3)$

$KO = (2.3, 2.2, 2.1)$



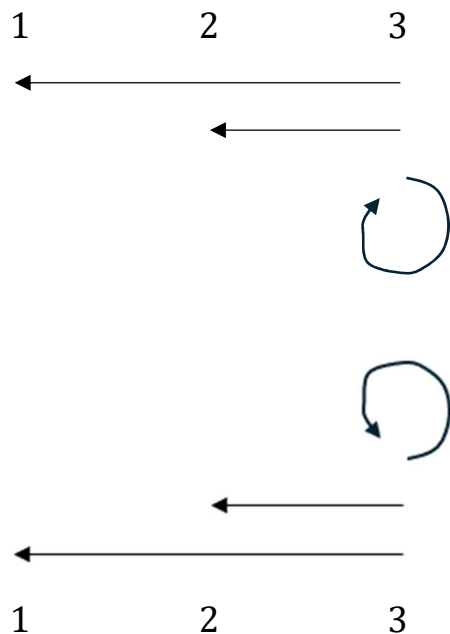
$O' = (3.1, 3.3, 3.2)$

$KO' = (3.2, 3.3, 3.1)$



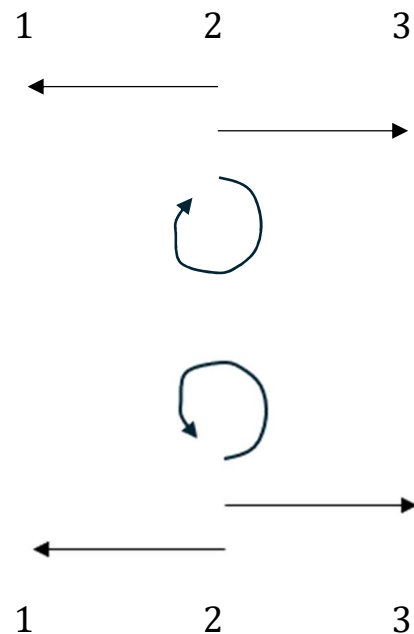
$I = (3.1, 3.2, 3.3)$

$KI = (3.3, 3.2, 3.1)$



$I' = (2.1, 2.3, 2.2)$

$KI' = (2.2, 2.3, 2.1)$



Literatur

Toth, Alfred, Die quadralektische Subzeichenrelation. In: Electronic Journal for Mathematical Semiotics, 2026a

Toth, Alfred, Relationale Einführung der Zeichenbezüge. In: Electronic Journal for Mathematical Semiotics, 2026b

Toth, Alfred, Reflektorische Zeichenbezüge. In: Electronic Journal for Mathematical Semiotics, 2026c

6.4.2026